



A Measurably Better Erosion Control System

- **One Step Application for 100% Coverage** Conforms to the soil surface, No special site preparations, eliminates tenting and under-rilling problems, Excellent germination results, adheres to almost any soil surface.
- **Enhanced Germination** Holds seed and fertilizer in place. Allows moisture, sunlight and plants to penetrate.
- **Substantial Savings with Every Application** Requires less labor and substantially less time to install. Soil Guard® application is significantly less than conventional methods. Can be applied to sites where blanket-like protection is required.
- **Reduced Soil Erosion and Water Runoff** Dries into a flexible mat. Minimizes the impact of even heavy rain. Slowly releases moisture to the soil below. Remains cohesive and bonded to the soil.
- **Fully Biodegradable** Non-toxic and fully biodegradable. Made from a blend of wood fibers, a natural binding agent, and a mixture of organic and mineral activators. No plastic netting, so it's safer for wildlife. No harmful residues.
- **More Convenient Handling** Self-contained one bag system is easy to apply and relatively maintenance free. Packaged in durable plastic bags for easy transport and handling.

Soil Guard® Bonded Fiber Matrix is a breakthrough in erosion control technology.

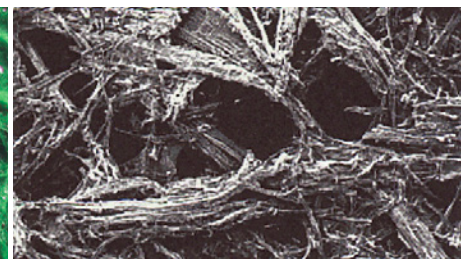
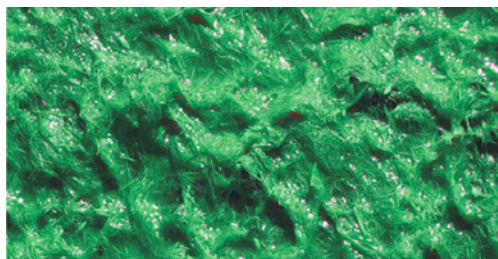
Soil Guard® Bonded Fiber Matrix, (BFM) represents a breakthrough in erosion control technology. It is a one-step, first generation, hydraulically applied erosion control system that has revolutionized the practice of soil conservation.

Unique among erosion control systems, Soil Guard® delivers the performance of an erosion control blanket combined with a dramatic cost savings of time and labor. The result is a high-performance erosion control system that provides vegetation establishment on severe slopes.

Soil Guard® conforms to the contours of the ground and dries to form a bonded fiber matrix. Once dry, the matrix can withstand wind and rain, while holding the soil and seed in place for optimum plant growth. Soil Guard's® patented formula is non-toxic and 100% bio-degradable that is safe for all environments.



Soil Guard® conforms to the contours of bare soil on contact for immediate erosion control protection. Because it is hydraulically applied, Soil Guard can be used to treat areas that are difficult or impossible to protect with other erosion control systems.



Soil Guard's® color makes gauging of application rates easy, to ensure proper application. Shown at 40X magnification, Soil Guard fibers bond to form a matrix that holds soil and seed in place.



SOIL GUARD®

Intended Use:

Soil Guard® has been designed to control superficial erosion caused by wind or falling rain on the treated area. Soil Guard® controls erosion until permanent stabilizing vegetation can be established in disturbed areas commonly associated with: state, county, or city D.O.T., Corps of Engineers/flood control, landfills, water retention ponds, landscaping, retaining wall structures, pipe and cable trenching, ski areas, golf courses, home lawns, and wetlands.

Trust Soil Guard® to produce easy, consistent, reliable results.

Application equipment is available.

Contact us today for more information.



Choose Soil Guard® Bonded Fiber Matrix when:

- Steep or rugged terrain make soil preparation difficult or impossible.
- Weather or schedules demand immediate erosion protection and fast plant growth.
- Severe slopes or surface flows require erosion protection for up to nine months.
- Nearby wildlife habitat or residential areas need nontoxic solutions. (When used as directed).
- Cost-effectiveness, timeliness, results and quality are important.

Application Rates & Technical Data

Application Rate	Lbs/Acre	Kg/Ha
≤3H to 1V or flatter	3000	3499
>3H to 1V and ≤2H to 1V	3500	3900
>2H to 1V and ≤1H to 1V	4000	4500
Below ECB or TRM	1500	1700
As infill for TRM	3500	3900

Increase application rates on highly erosive soils or chiseled disked, furrowed or tracked slopes.

Material should not be applied in channels, swales or other areas where concentrated flows are anticipated, unless installed in conjunction with a temporary erosion control blanket or non-degradable turf reinforcement

Contact your LSC representative for site specific application rate and instructions.

Packaging

- Packaged in 50 lb bale (22.6 kg)

For technical services or to locate your nearest Soil Guard® dealer:



Call: **1-800-800-7671** • Email: **Sales@LSCenv.com**

Visit LSC online at: **www.LSCenv.com**

LSC Environmental Products, LLC

2183 Pennsylvania Ave., Apalachin, NY 13732

Information and statements herein are believed to be reliable but are not to be construed as a warranty or guarantee. Some extreme situations may require higher application rates. LSC Environmental Products, LLC offers no warranties, express or implied. Nothing herein is to be taken as permission to practice any patented invention without a license. © 2023 LSC Environmental Products, LLC